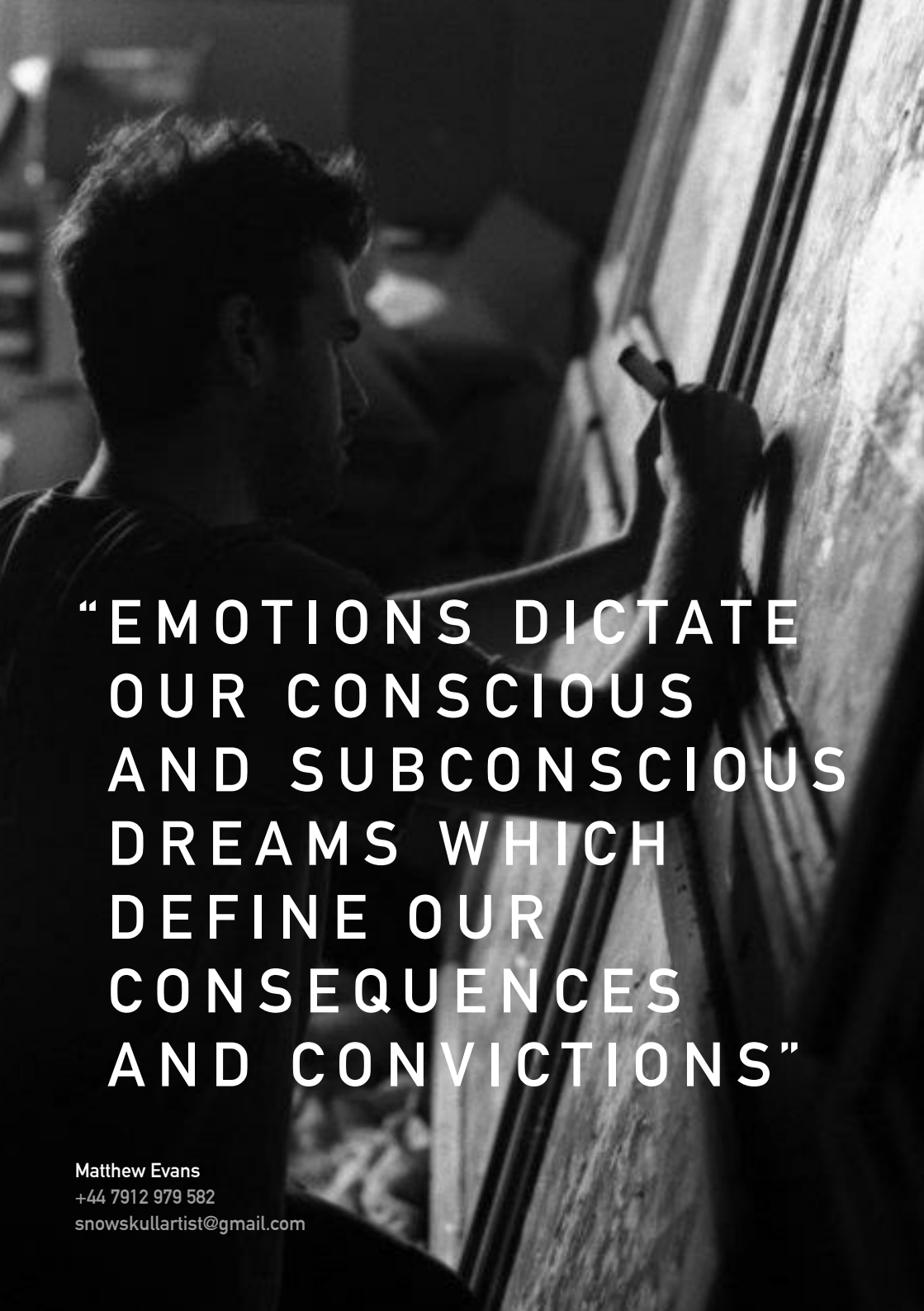




SNOW SKULL

ARTIST & CREATIVE DIRECTOR



“EMOTIONS DICTATE
OUR CONSCIOUS
AND SUBCONSCIOUS
DREAMS WHICH
DEFINE OUR
CONSEQUENCES
AND CONVICTIONS”

Matthew Evans
+44 7912 979 582
snowskullartist@gmail.com

SnowSkull is an intuitive, self-taught artist, focusing primarily on contemporary abstract painting and digital manipulation but with a growing portfolio of video, music and mixed-media collaborations.

As a visual artist, SnowSkull's work takes the form of rich, textured tapestries, characterised by bold colours and fluid forms, set against stark atmospheric backgrounds. Conceptually, the paintings explore dreams, dream-states, and the vivid, hyper-real aesthetics of the space between wakefulness and sleep.

Having previously collaborated on a range of musical projects before focusing on the visual medium, SnowSkull's personal and artistic roots in writing and performing music now bear fruit in his role as creative director of the Sleep/Walk/Listen project, and his artworks have adorned a wide array of digital and vinyl releases from emerging musicians and producers across the world.

Cynosure
2015 (Cover)

An abstract painting with a dark, textured background. It features vibrant, swirling colors including teal, blue, and magenta. There are splatters and drips of paint, creating a dynamic and expressive composition. The word 'PAINT' is overlaid in large, semi-transparent letters.

PAINT

FUSING
FORMS ON
CANVAS



—
Somnambulist
2015

—
Nubivigant
2016





— We Play Bodies - Full Vital Motion
2011



— We Play Bodies - Stop / Start
2011

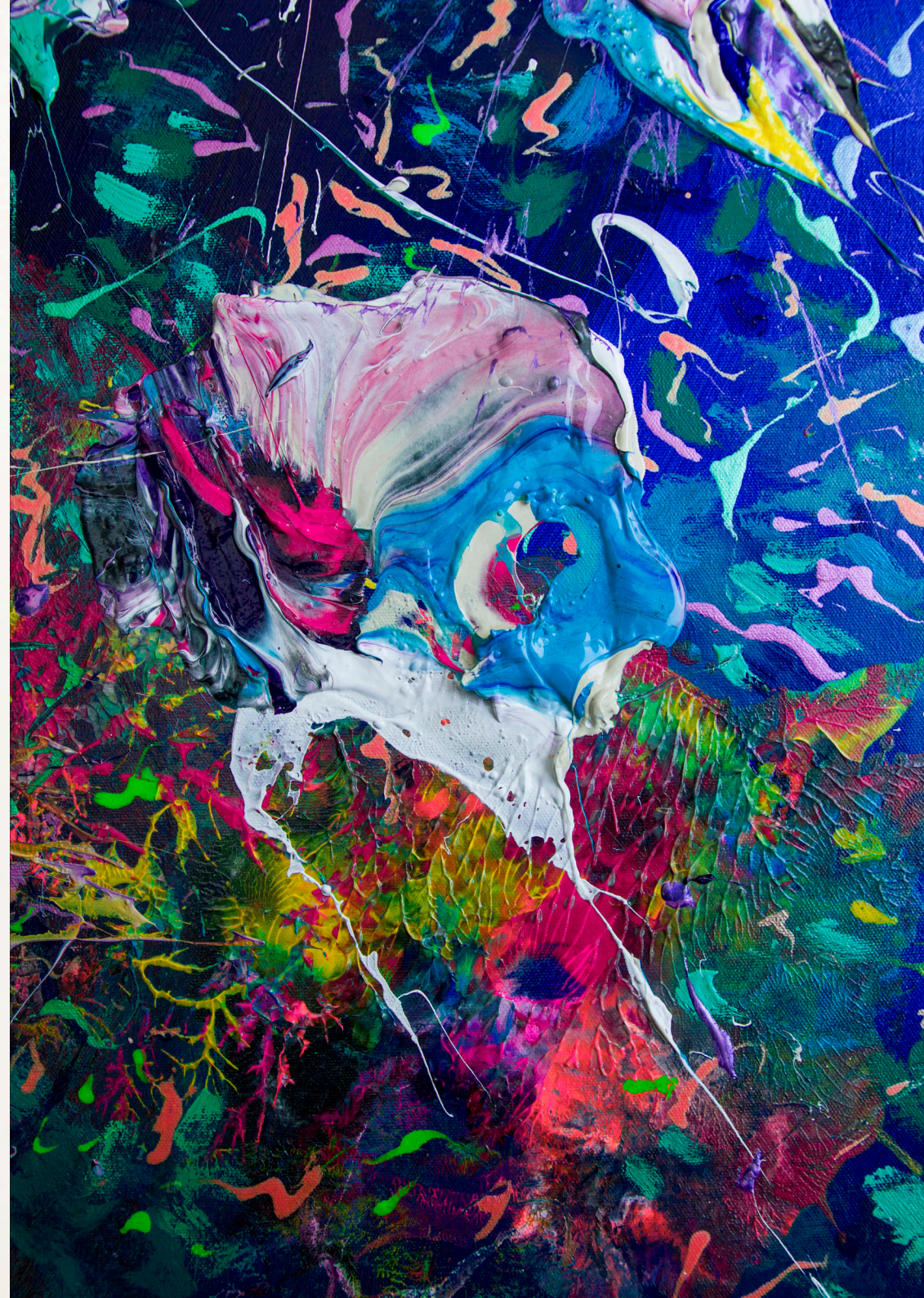
An abstract painting with a dense, textured surface. The composition is dominated by vibrant magenta and fuchsia hues, interspersed with deep blues, greens, and earthy browns. The brushstrokes are thick and expressive, creating a sense of movement and depth. The overall effect is a rich, layered visual experience.

DIGITAL

DREAMS IN
BINARY



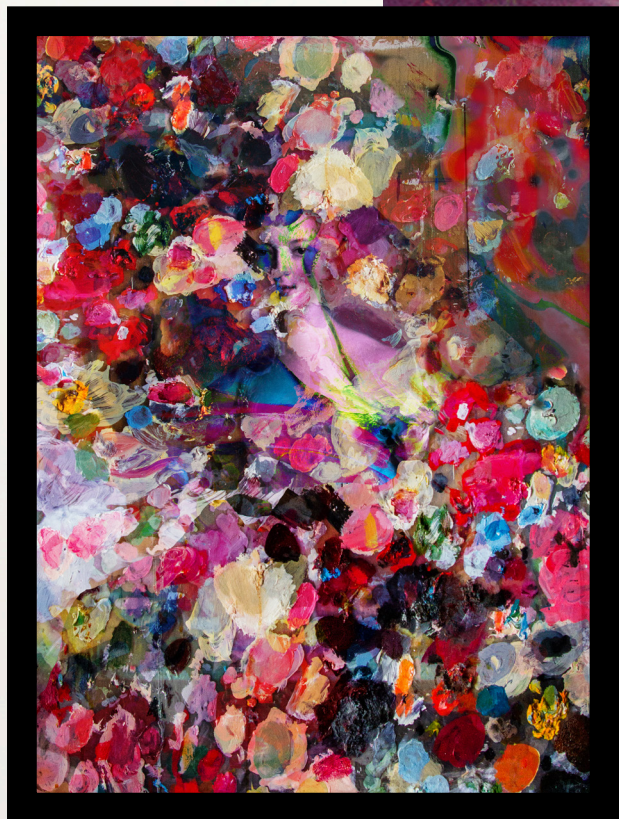
—
Jouska
2015



—
Gravitate
2016



Billet-Doux
2015



—
The Aquatic Nocturne II
2016



—
Forelsket Minutiae II
2016



RECORD SLEEVES

MERGED
SONICS

—
Bodhi - Step It Back
Black Butter Records
2016

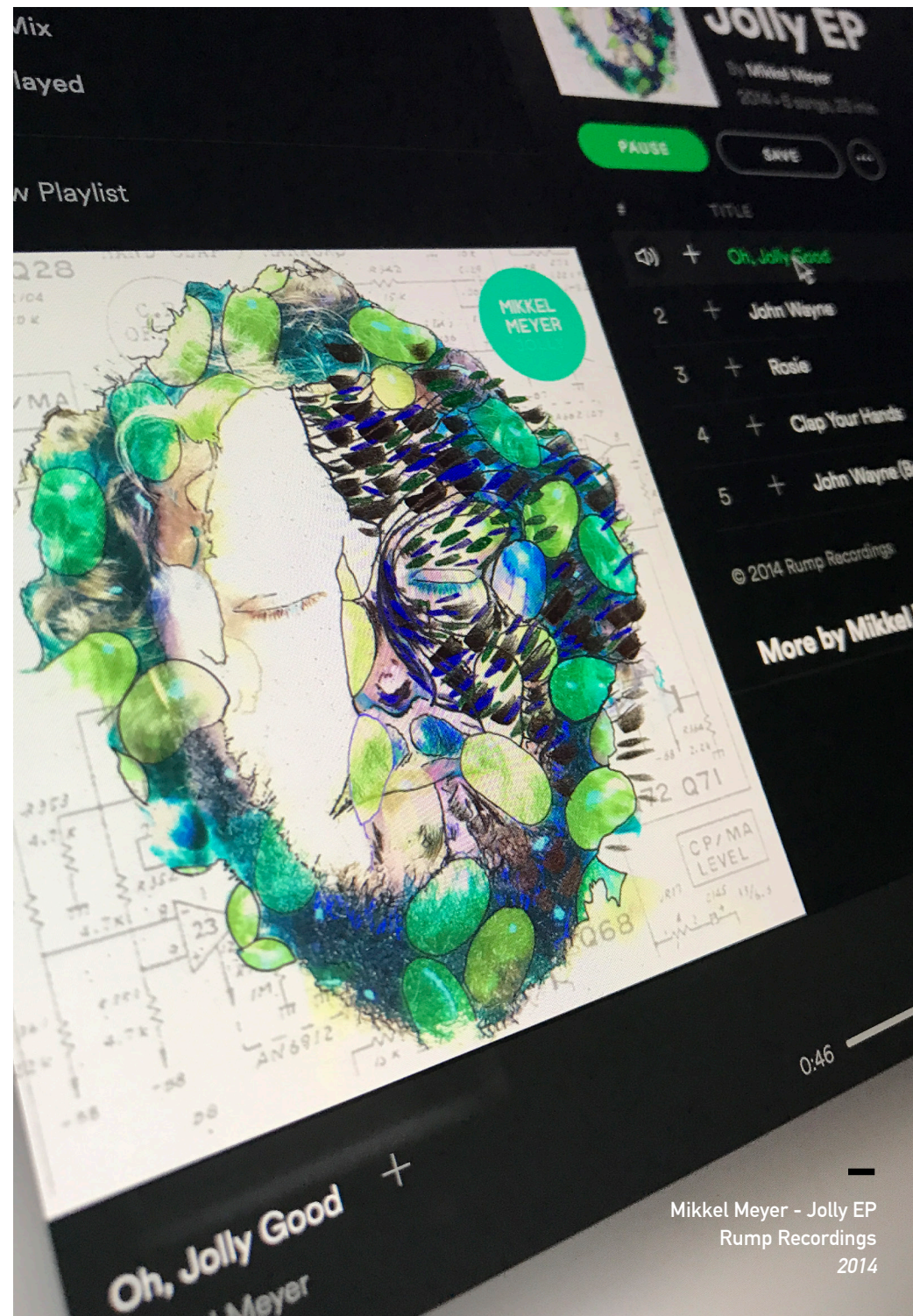


Bodhi - Howler EP
Black Butter Records
2015



—

Snowpoet - Snowpoet
Two Rivers Records
2016



—

Mikkel Meyer - Jolly EP
Rump Recordings
2014



Cities - Manning Alaska
Self Released
2015



Funeral For A Friend -Conduit
Distiller Records
2013



Attlaes - Hanami Bloom
Self Released
2015



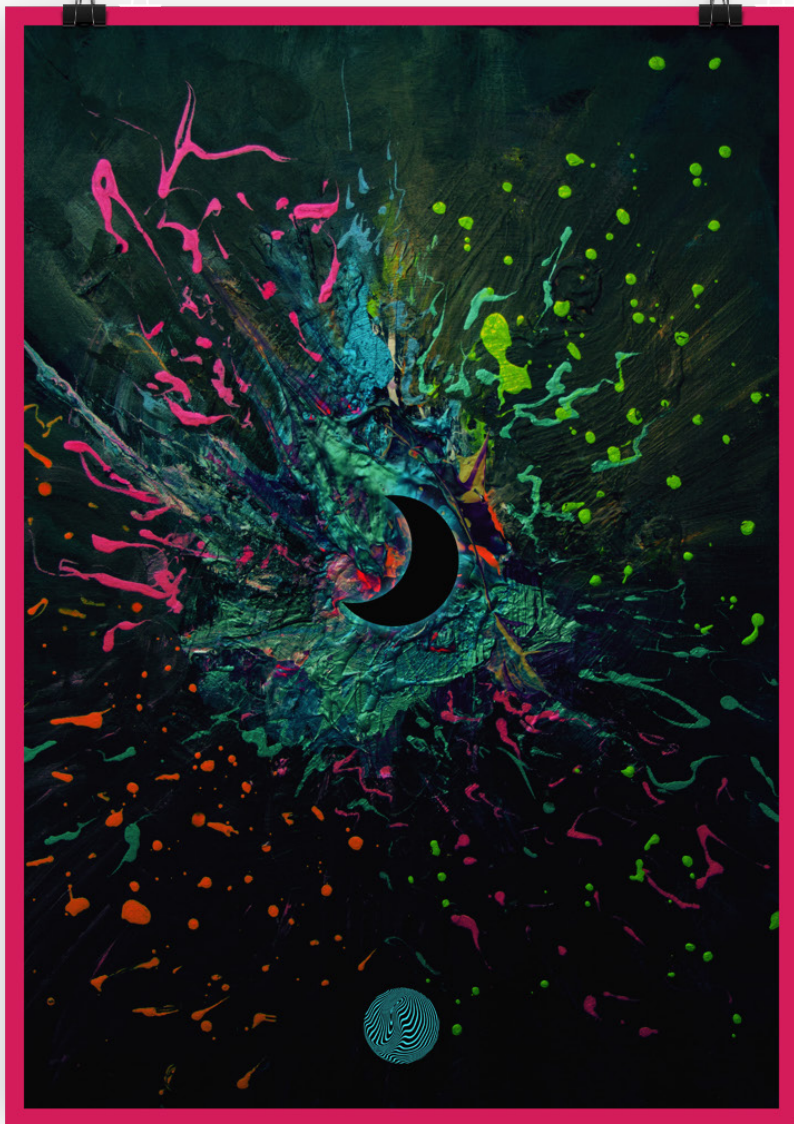
SLEEP WALK LISTEN

AUDITORY
COLLABORATION

SWL003
Flashes Before
Your Eyes
Sleep/Walk/Listen
2015

Sleep/Walk/Listen is a project designed to create stronger connections between electronic music and the visual arts. Our aim is to explore the differing ways these two art forms work together to create new experiences. My work as creative director for SWL involves my visual innovation, aspirations and understanding of the two mediums.

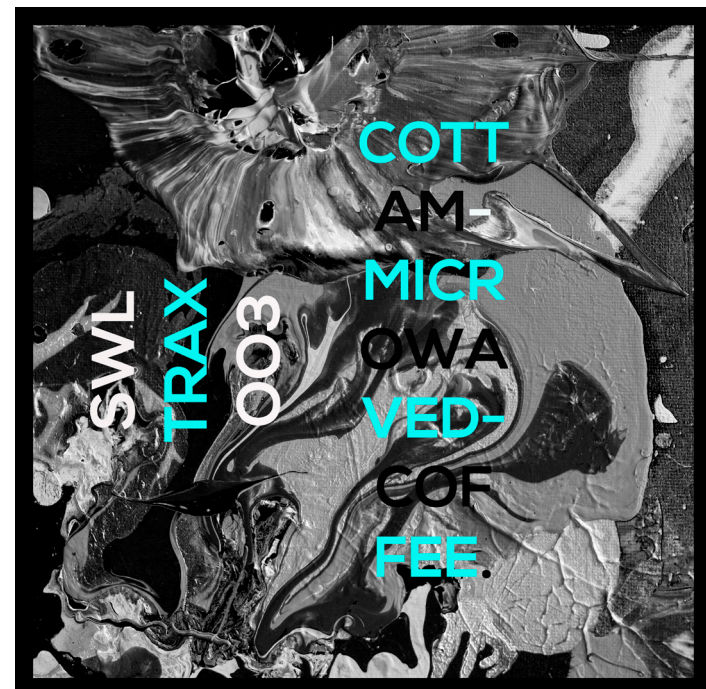
In the short time we have been active we have collaborated with a host of top music producers and visual artists from around the globe and receive continued support from 'Thump' & 'Red Bull Music Academy', amongst others.



SWL005
SnowSkull x Egokind & Ozean - Funambulate
2015



Owls
Resident Mix
2015



SWLTRX003
Cottam -
Microwaved Coffee
2016

CAREER HIGHLIGHTS

EXHIBITIONS

Painting and site responsive artwork

Garden of Earthly Delights
Cardiff Contemporary, Cardiff
October 2016

Summer SHO
The SHO Gallery, Cardiff
June 2016

Breath of Nature
Boundary Art, Cardiff
March 2016

Art Greenhouse
The Edwardian Cloakrooms, Bristol
July 2015

Hotel Brevity
Nos Da, Cardiff
May 2015

Art Hotel
The Abacus, Cardiff
November 2014

Made in Roath
Milgi, Cardiff
October 2014

PRESS

Print, online and radio

Seek Sick Sound (Paris, France)
June 2017

Big Shot Magazine (New York, USA)
April 2017

Guardian and Observer Fashion
(Manchester, UK)
January 2016

Thump (Montreal, Canada)
November 2015

Red Bull Music Academy (Cologne, Germany)
July 2015

Never Enough Notes (London, UK)
January 2015

BBC Radio One (London, UK)
April 2014

Crack Magazine (Bristol, UK)
January 2014

XLR8R (Seattle, USA)
January 2014

Pitchfork (Chicago, USA)
February 2013

CLIENTS

As artistic director

Big Love Festival
April 2017

BBC Connected Studio
May 2016

Black Butter Records
March 2016 & October 2015

Rinse FM
May 2015

Two Rivers Records
January 2016 & September 2016

Rump Recordings
April 2014

End Hits Records
November 2013

Grizzly
January 2013

Push & Run Records
September 2012

WORK

Visual Artist
SnowSkull

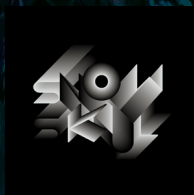
Creative Director
Sleep/Walk/Listen

Curator
The Boundary Art Gallery, Cardiff Bay

CONTACT

Matthew Evans
+44 7912 979 582
snowskullartist@gmail.com

snowskullart.com
sleepwalklisten.com
sleepwalkartcollective.com



ARTIST & CREATIVE DIRECTOR



Matthew Evans
+44 7912 979 582
snowskullartist@gmail.com